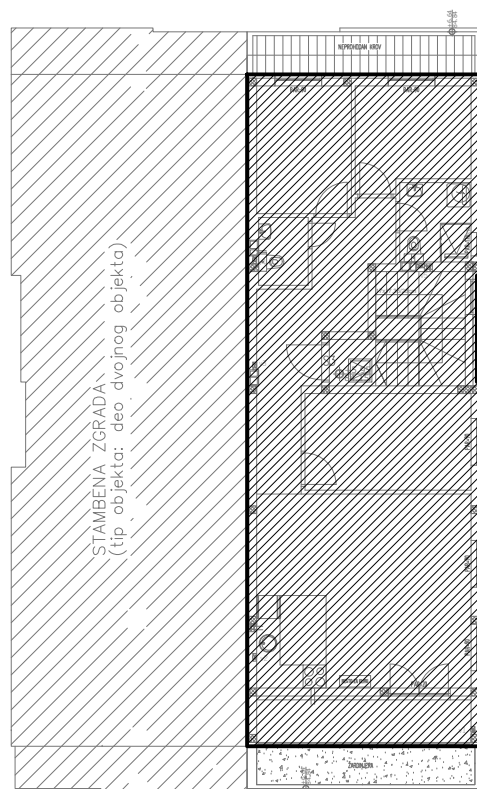
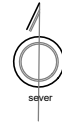
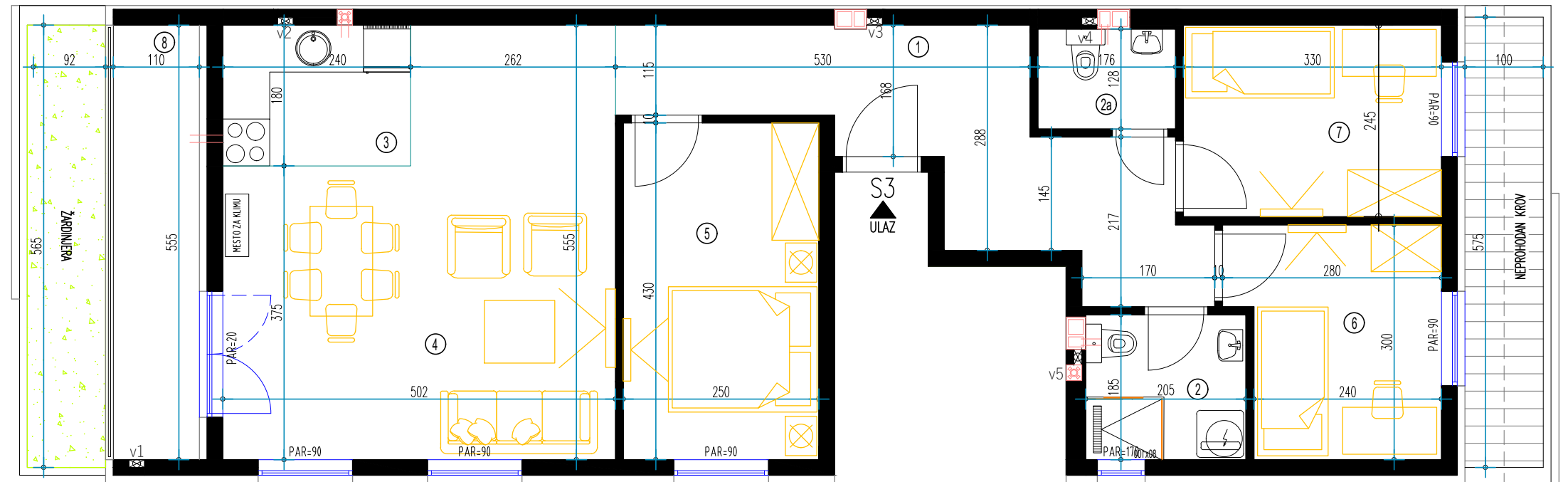


SITUACIJA



ulica Hristofora Žefarovića

POTKROVLJE



POTKROVLJE

S3 - troiposoban

| BR. | NAZIV PROSTORIJE | VRSTA PODA | POVRŠINA PODA | KOEF. | KORISNA POVRŠINA |
|-----|------------------|--------------|----------------------|-------------------------------|----------------------------|
| 1 | Ulaz | ker. pločice | 12,80 m ² | 1,00 | 12,80 m ² |
| 2 | Kupatilo | ker. pločice | 3,79 m ² | 1,00 | 3,79 m ² |
| 2a | WC | ker. pločice | 2,25 m ² | 1,00 | 2,25 m ² |
| 3 | Kuhinja | ker. pločice | 4,32 m ² | 1,00 | 4,32 m ² |
| 4 | Dnevna soba | ker. pločice | 23,76 m ² | 1,00 | 23,76 m ² |
| 5 | Soba | ker. pločice | 10,75 m ² | 1,00 | 10,75 m ² |
| 6 | Soba | ker. pločice | 7,61 m ² | 1,00 | 7,61 m ² |
| 7 | Soba | ker. pločice | 8,08 m ² | 1,00 | 8,08 m ² |
| 8 | Terasa | ker. pločice | 6,26 m ² | 1,00 | 6,26 m ² |
| | | | | UKUPNO: | 79,62 m ² |
| | | | | komercijalna površina k-0,97: | 77,23 m² |

BROJ UGOVORA

kontakt tel.